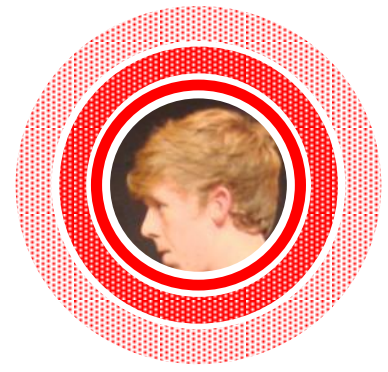


# REDBORNE UPPER SCHOOL & COMMUNITY COLLEGE



---

## SCIENCE NEW INTAKE 2014

Head of Faculty:  
Mr A Day



**Academic excellence Shared values Outstanding education**



# SCIENCE

## **Liaison with the Middle Schools**

- 1 Key Stage Co-ordinators from Redborne visit the Middle Schools regularly co-operating in the arrangements for transfer of students.
- 2 There are liaison meetings where topics such as common teaching techniques, progression and assessment are discussed.
- 3 Students from Year 8 visit Redborne for two days, just prior to transfer, during which they may take part in a sample Year 9 lesson with one of their new teachers.
- 4 Students take a common end of KS3 test across Middle Schools in Year 8 to provide an exit level for KS3 and to help with setting arrangements in Year 9.

## **Year 9 Provision**

Students in Redborne will follow one of three possible KS4 pathways appropriate to their ability in KS4 as soon as they join Redborne in Year 9.

Pathway 1 – Students will have 7 lessons of science per fortnight following the Core AQA GCSE specification, these students will then move onto Additional AQA GCSE science part way through Year 10 on completion of the Core specification. This pathway will lead to two examined GCSEs (A\* - G) or depending on option choices in Year 9 it can lead to three separate GCSEs in biology, chemistry and physics (triple science) at the end of Year 11.

Pathway 2 – Students will have 5 lessons of science per fortnight following the Core AQA GCSE specification leading to one examined GCSE (A\* - G) at the end of Year 11. Students could choose to study Additional science GCSE as an option choice in Year 9.

Pathway 3 – Students will have 5 lessons of science per fortnight following the OCR Cambridge National Certificate leading to a Level 1 Pass, Merit or Distinction or a Level 2 Pass, Merit, Distinction or Distinction Plus (a Level 2 Pass being equivalent to a GCSE grade C).



During Year 9:

Students on pathway one will study work from the following modules of the KS4 AQA Core science GCSE

*Biology 1, Chemistry 1, Physics 1*

Students on pathway two will also study work from the following modules of the KS4 AQA Core science GCSE

*Biology 1, Chemistry 1, Physics 1*

Students on pathway three will study the following unit from the OCR Cambridge National scheme.

*Unit 071 – How do scientific ideas have an impact on our lives?*

Further AQA modules and OCR National units will then be studied in Years 10 and 11.

Students are selected for the different options based on their performance in the Year 8 exit test, Key Stage 2 SATS data and advice from Middle School Teachers.

### **Further GCSE Provision**

As well as the pathways above students will also have further opportunities in Psychology and on the Farm open to them following the options process in Year 9.

### **Assessment**

#### **Core**

3 Final examinations	75%
1 Centre assessed unit	25%

#### **Additional**

6 Final examinations	75%
2 Centre assessed unit	25%

#### **Triple**

9 Final examinations	75%
3 Centre assessed unit	25%

#### **OCR Cambridge Nationals**

Portfolio/coursework	75%
Final exam	25%



## **Sixth Form Provision**

The Science Faculty offers the following subjects at AS level in Year 12 and A2 in Year 13:

Biology	(OCR)
Chemistry	(OCR)
Physics	(OCR)
Psychology	(AQA)
Biology	(BTEC)

## **Extra Curricular Activities**

The faculty runs a STEM club (Science, Technology, Engineering and Maths) which meets regularly on Monday after school and an Environmental club.

The Faculty arranges guest speakers, visits to lectures, opportunities to visit Higher Education establishments and field trips.

The work done by the science teaching staff is strongly supported by a hard working team of technicians.

