




REDBORNE UPPER SCHOOL  
& COMMUNITY COLLEGE




# Sixth Form Prospectus

2021-22

Academic Excellence • Outstanding Education • Shared Values

 Flitwick Road,  
Amphill, Beds,  
MK45 2NU

 01525 842619

 [sixthform@redborne.com](mailto:sixthform@redborne.com)



# Welcome

## to the Sixth Form at Redborne Upper School and Community College

Redborne is a highly successful and popular school of approximately 1,650 students. Our Sixth Form is large with over 450 students, of whom around 70% annually go on to university including Oxford, Cambridge and other Russell Group universities.

Our most recent Ofsted inspection judged the Sixth Form to be 'outstanding' because of the breadth of our curriculum and the consistently excellent results our students have obtained. As a result of our high performance, we have been awarded Leading Edge status and awarded Teaching School status.

We are now the largest school for post-16 education in Central Bedfordshire and have maintained the breadth of our curriculum with a wide range of A level and vocational courses on offer. Each year we welcome students from other institutions who make the decision to join us and take advantage of the opportunities available at Redborne to develop academically through our wide curriculum and to make new friends.

We hope you will find this prospectus informative and helpful; a lot more information is also available on our website.



Headteacher, Mr Olly Button

- a large and successful Sixth Form with over 450 students
  - first rate facilities and equipment including a newly built café specifically for sixth form use
  - a curriculum for the future - broad, balanced and flexible
  - a constantly developing curriculum, including applied and vocational qualifications
  - strong links with local employers
  - an inclusive approach
  - excellent pastoral support
  - a strong partnership with parents
  - a wide range of enrichment and extra-curricular provision including sports, music and drama
  - a vibrant Duke of Edinburgh award programme, with students each year completing their Gold Award
  - opportunities for work experience
  - links with colleges and universities
-



Redborne, a 13-18 Upper School since the early 1970s, is ideally placed to provide community education in the area. As an Upper School and Community College, Redborne serves Ampthill, Flitwick, Maulden and neighbouring villages.

The school stands in 40 acres of attractive grounds, with a wide variety of trees, shrubs, flower beds and rock gardens. There are pitches, courts, as well as an athletics track in the summer.

In addition there is a floodlit all-weather sports area, as well as an all-weather floodlit 3G football pitch. The school also has its own farm, used for both livestock and horticulture.

Sixth Formers will benefit from the recently refurbished Culcheth Centre, A purpose-built canteen was opened in September 2018 exclusively for Sixth Form use, serving hot and cold snacks and drinks during the school day.

Please contact us for an appointment:

Telephone: **(01525) 842619**

Website: **[www.redborne.com](http://www.redborne.com)**

Email: **[sixthform@redborne.com](mailto:sixthform@redborne.com)**





# What We Offer

## Our aims are:

- Academic excellence by providing a broad, balanced, stimulating and flexible curriculum that centres on the needs and engagement of the individual student. We place teaching and learning at the heart of our professional development programme, recruiting and retaining high-quality staff and maintaining a sharp focus on monitoring progress;
- Shared values such as tolerance, caring for others, democracy, self-discipline, independence and mutual respect to foster the spiritual, emotional, moral, social and cultural development of students both as individuals and as citizens in society;
- Outstanding education in its broadest sense, through a vibrant programme of curricular, pastoral and extra-curricular activities, to prepare students for a positive and confident approach to the next stage of their education, training or employment and for adult life.



## We offer our students in the Sixth Form:

- a wide range of subjects to suit nearly all interests and abilities
- a 2 year programme designed to help students make the transition from year 11 student to a university undergraduate, higher-level apprentice or employee
- strong links with higher education institutions all over the country
- regular updates on progress
- the opportunity to learn more about themselves and develop a Sixth Form mindset
- advice on how to choose relevant courses
- careers advice and guidance
- a supportive pastoral programme aimed at building independent study skills, motivation and resilience





## Facilities

Redborne's Sixth Form benefits from a range of first rate facilities that are available to students:

- refurbished Sixth Form common room with PC suite and spacious areas for independent study
- newly-build canteen exclusively for Sixth Form use
- new purpose-built school hall with seating for over 500 people for assemblies and school productions
- spacious, well stocked library, and resource centre
- a new technology block containing a range of multi-design studios, food and textiles technology rooms
- a new art studio
- 13 science laboratories
- music centre including music technology facilities, a suite of practice rooms and a recording studio
- 3 acre farm with livestock, greenhouses and classrooms
- IT centre
- drama studio
- dance studio
- film studio
- large sports hall
- gymnasium



## Courses

At Redborne, students are expected to begin a combination of A level, AS level and vocational courses usually lasting two years. University offers are based around three A level or equivalent qualifications, so we try to offer all students the chance of studying their top three subjects, with a fourth subject often available if timetabling and class sizes allow.

At Redborne we offer a wide range of courses that are constantly reviewed. The courses usually on offer are:

- art
- biology
- medical science
- business
- chemistry
- children's play, learning and development
- classical civilisation
- computer science
- dance
- drama and theatre studies
- economics
- English language & literature
- English literature
- environmental studies
- fashion and clothing (double award)
- film studies
- food technology
- French
- geography
- German
- graphic communication
- politics
- health and social care
- history
- ICT
- law
- mathematics
- further mathematics
- music
- music technology



- physical education
- physics
- product design
- psychology
- religious studies
- Spanish
- sport
- sociology
- core mathematics

Full details of the courses available for the next academic year, along with entry requirements, are available in our curriculum guide.



# Enrichment

All students in the Sixth Form at Redborne are encouraged to get involved in one or more of the enrichment activities that are on offer. Participating in an enrichment activity helps provide an opportunity to develop new skills, help others and gain relevant experience for future ambitions. It is also important for applications to university, apprenticeships or jobs. Activities include:

- buddying form groups
- academic tutoring of students lower down the school
- working with younger students in Learning Support, registration time or subject lessons
- the Duke of Edinburgh's Award Scheme
- extended project qualification (EPQ)
- a wide variety of educational visits
- choir, jazz band and other music opportunities
- school drama productions, both as performers and sound and lighting engineers
- Teachers for Tomorrow
- Year Council and Prom Committee
- sports clubs

Our Sixth Form students can volunteer to join the year council and at the end of year 12 there will be the opportunity to apply to become a senior student. This will involve a rigorous process of interviews and presentations. Both of these crucial conduits for student voice have proven to be exciting and formative experiences.

In addition, our Sixth Form students raise large amounts of money for a range of different charities every year. They are encouraged to take the initiative and often organise their own events and activities.







## Partnership with Parents in the Sixth Form

We regard a constructive and helpful dialogue between school and parents as very important in contributing to the effectiveness of our students' education. Through monitoring, reports and parents' evenings, parents are closely involved and well informed of progress and problems.

Each student will be based in a form group with a form tutor. The form tutor will form a close relationship with the student and they will oversee academic and personal development.

The form tutor will also oversee progress checks, reports for parents and will help write university and career references.

The year team will work closely with form tutors and oversee the academic progress and supervise the general welfare of all students.

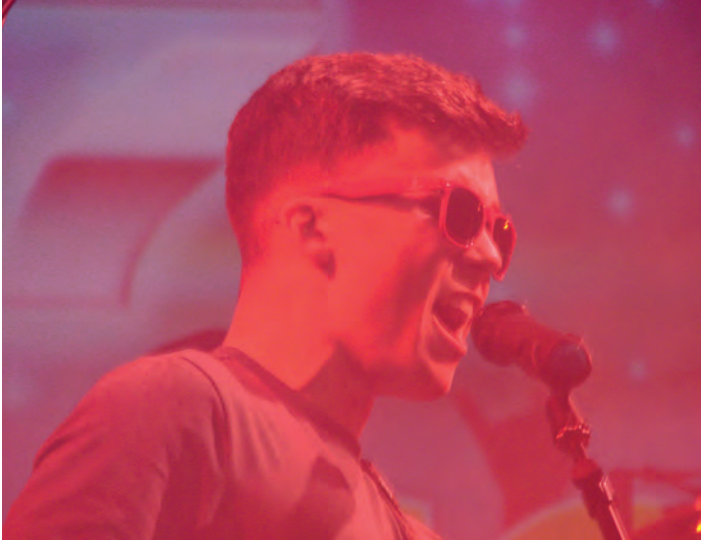
At regular parents' evenings subject staff report on academic progress.

Reports are written annually for students in years 12 and 13 to provide guidance on how they can develop academically. However, the form tutor or year team will contact parents whenever there is any cause for concern.

The year team meets parents to explain the university entrance procedures including financial information.







## The Wider Curriculum

As well as the enrichment programme, we encourage students to take part in activities outside the normal school curriculum. A variety of clubs and societies meet during the lunch break, after school and on other occasions. Sixth formers often take a leadership role in helping to run clubs for students in the lower years.



These activities are not only enjoyable in themselves, but encourage commitment, self-reliance and co-operation, all qualities valued by employers and universities.

Through a rigorous process Redborne has maintained strong traditions in sport, drama, dance and music, all of which involve a large number of students.





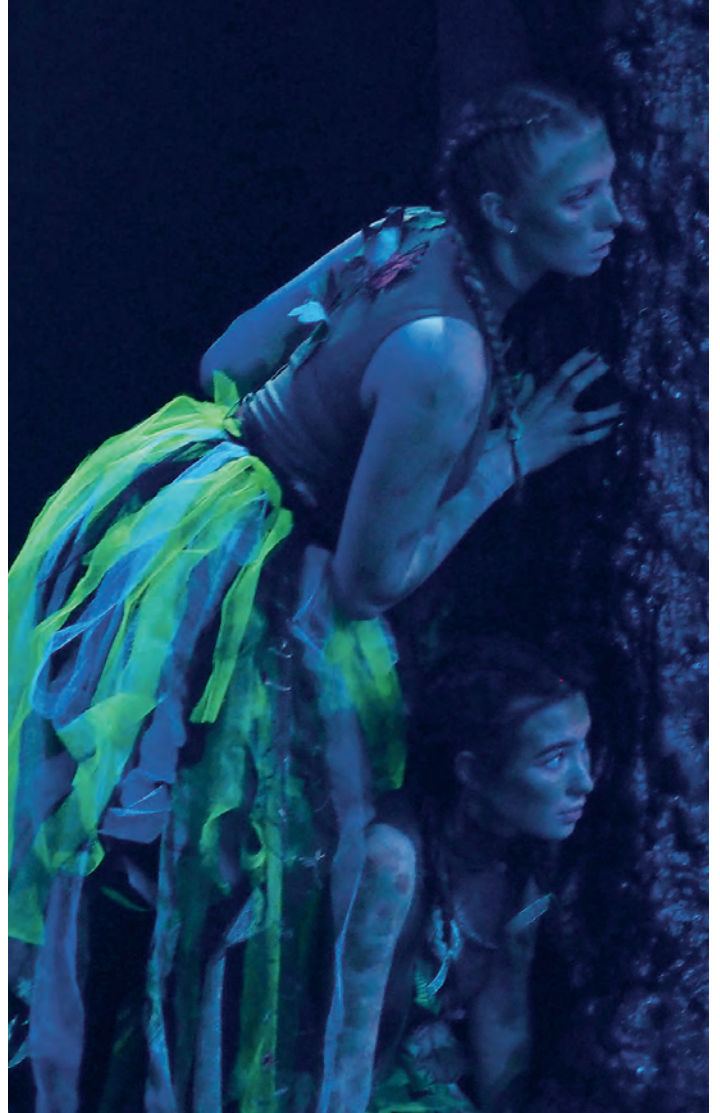
# The Wider Curriculum

## Drama

Redborne has a newly built main hall with excellent theatre facilities of light and sound with seating for over 400. There is also a drama studio where students can explore different uses and techniques in lighting within a carpeted space ideally suited for all forms of drama.

Theatre trips are a regular feature of the department with visits to London, Birmingham and Warwick theatres to see performances as diverse as Equus, Chicago, Faust or The Caucasian Chalk Circle.

The school has a well-deserved reputation for the quality of its productions. Recent productions have included We Will Rock You, Les Miserables, Into the Woods and Oliver!



## Sport

We offer students the opportunity to take part in a variety of sporting activities either as a recreational activity or at a competitive level. The school provides many players for district and county teams and students regularly reach national levels.

The main sports are: rugby, hockey, volleyball, tennis, basketball, trampolining, netball, athletics, cricket, badminton, cross country, and football. We also have a well-equipped fitness suite.





## Music

Music is an equally important feature of school life, within and beyond the taught curriculum. There is a school choir, orchestra, concert band, string group and various ensembles which are regularly called upon to give public performances.

A number of Sixth Form students are members of county orchestras and bands as well as performing for the school.



## Dance

Redborne has a fully-equipped dance studio that includes mirrors, a sound system and lighting facilities. A wide variety of dance genres is undertaken. The department has a well-deserved reputation for its dance shows. Students get the opportunity to perform at local theatres and take part in workshops at the University of Bedfordshire.



## Duke of Edinburgh Award

This has long been a successful aspect of our extra-curricular activities and large numbers of students regularly take part. Many Sixth Form students go on to achieve the silver and gold awards and help students lower down the school achieve their bronze and silver awards. Students have an opportunity to develop hobbies and interests, take part in community service and meet the challenges of camping and expeditions. They develop resilience, initiative, perseverance and organisational skills.







**REDBORNE UPPER SCHOOL**  
**& COMMUNITY COLLEGE**

---